



CAPABILITY STATEMENT

LOAD 28 CRANE HIRE

Adelaide's leading crane hire company – specialists in tight access, glass installation & everything in between



About Load 28

Load 28 was established in 2010 by current Managing Director Marcus Rigney and his brother Thomas Rigney, driven by a desire and passion to run a small service-based business within the building and construction industry.

The business has grown substantially over the past 13 years, and today, the Load 28 team is well recognised and respected within the South Australian construction industry as leading specialists in mobile crane hire, tower crane hire and Tier 1 projects.

We are proud to boast 29 cranes of all sizes and capabilities within our fleet and employ 103 valued staff within the Load 28 family. Our team are highly trained and experienced, having worked across a diverse range of industries and projects. They are specialists in their field and continuously updating their qualifications to provide the highest level of service to the industry.

Load 28's ongoing commitment to continuous improvement was recently recognised by being awarded finalists in the **2024 Telstra Best of Business Awards** for **Outstanding Growth in South Australia** against thousands of other applicants.

What are the driving forces behind our success?

- ✓ Fostering a team-based culture focused upon safety and quality customer experiences.
- ✓ Our experience managing specific project work that sits outside the normal scope.
- ✓ A vast range of equipment that is well maintained, operated by crew that are highly trained.
- ✓ An innovative mindset to the operation of our business and in the development of our products and services.
- ✓ Our 'plan the work...work the plan' philosophy, ensuring the seamless execution of critical parts of a project.



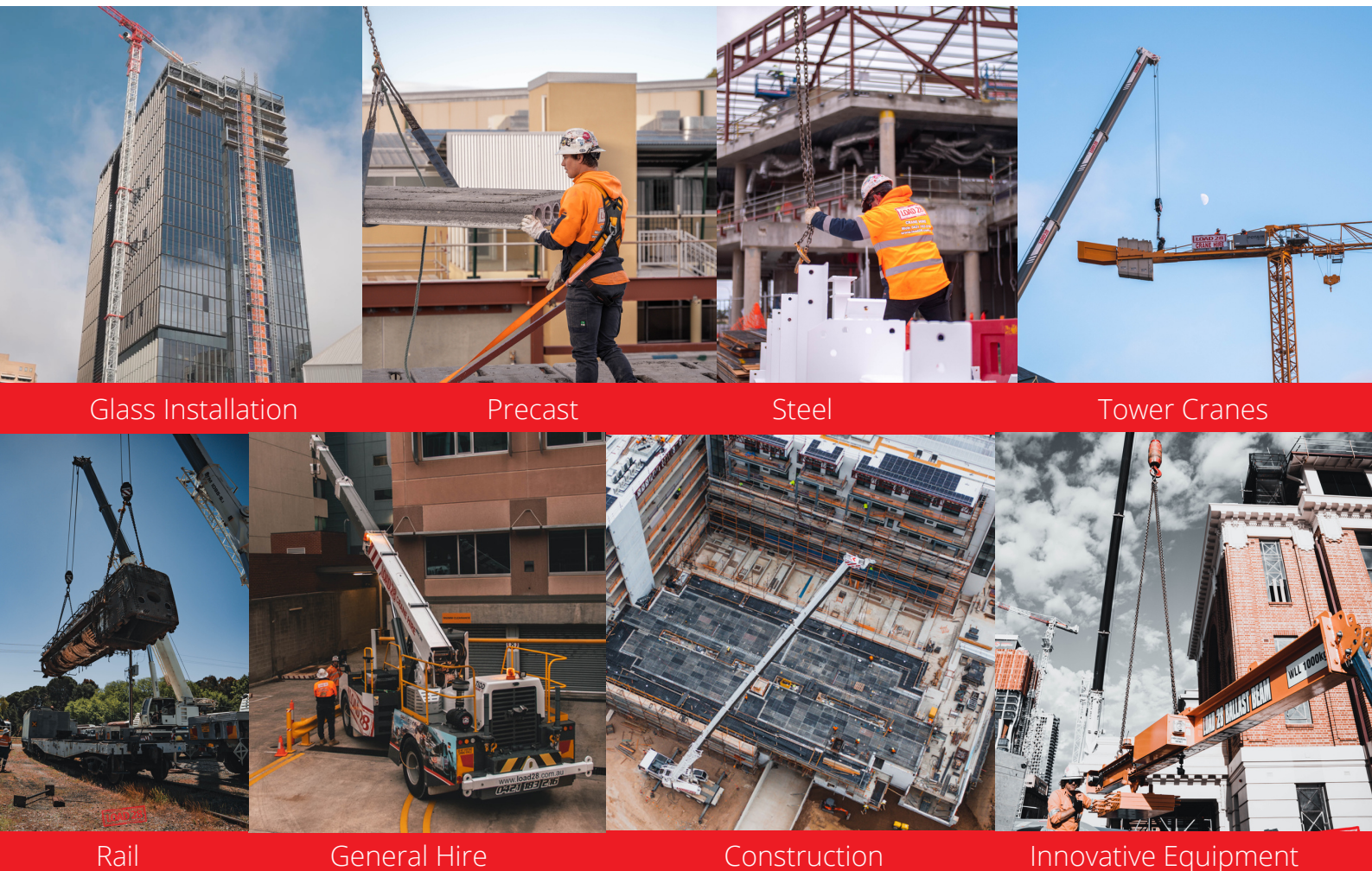
Load 28 provides the industry with well-maintained quality equipment, serviced regularly to exceed certified industry standards.

We have safe and effective lifting solutions for any project, and cranes and staff that can cater to any requirement, from limited access crane hire, unloading materials and equipment, structural steel and / or precast installation and Tower Crane provision including erection and dismantling. We are known leaders in South Australia for commercial glass installation.

Our exceptional project management skills, coupled with our innovative mindset gives us the tools necessary to manage a vast range of differing projects with critical path elements.

Plan the Work. Work the Plan.

MARCUS RIGNEY



Glass Installation

Precast

Steel

Tower Cranes

Rail

General Hire

Construction

Innovative Equipment



Our Services

➤ 24/7 Crane Hire

Load 28 are a 24-hour service, 7 days a week crane hire company. Based in Adelaide, South Australia, we service all areas within the state and no job is too big or too small for our team.

➤ Glass Vacuum Lifting Equipment 320kg–1000kg

Load 28 has a versatile range of vacuum lifting equipment for glass installation. Our team are specialised in glass lifting and replacement; and with over 8 vacuum varied capacity lifters in our fleet, we have equipment for any job.

➤ Project Work – Deltacore

Drawing on our experience working on large scale complex projects, Load 28 successfully manages a number of precast and structural steel installation projects. Load 28 is a known leader in Delta Core Installation.

➤ Mini Crane Hire Specialists

Load 28 carries an extensive range of Maeda mini crawler cranes. Featuring a machine width of 700mm wide, our mini cranes are an ideal solution for residential and commercial construction projects, where traditional cranes are too big.

➤ Commercial Glass Install

Load 28's affiliate company Australian Glass Install (AGI) is a specialised glass installation company working on Tier 1 projects in South Australia and Victoria. Comprising of 40 installers, Load 28 and AGI are well equipped to handle large scale projects.

➤ Tower Crane Specialists

Load 28 carries a fleet of tower cranes suited to residential and commercial construction. We employ experienced tower crane operators and riggers, supporting our projects with an array of lifting equipment specialised in handling materials for multi-storey construction.

➤ Further Services



Vertical Hoists

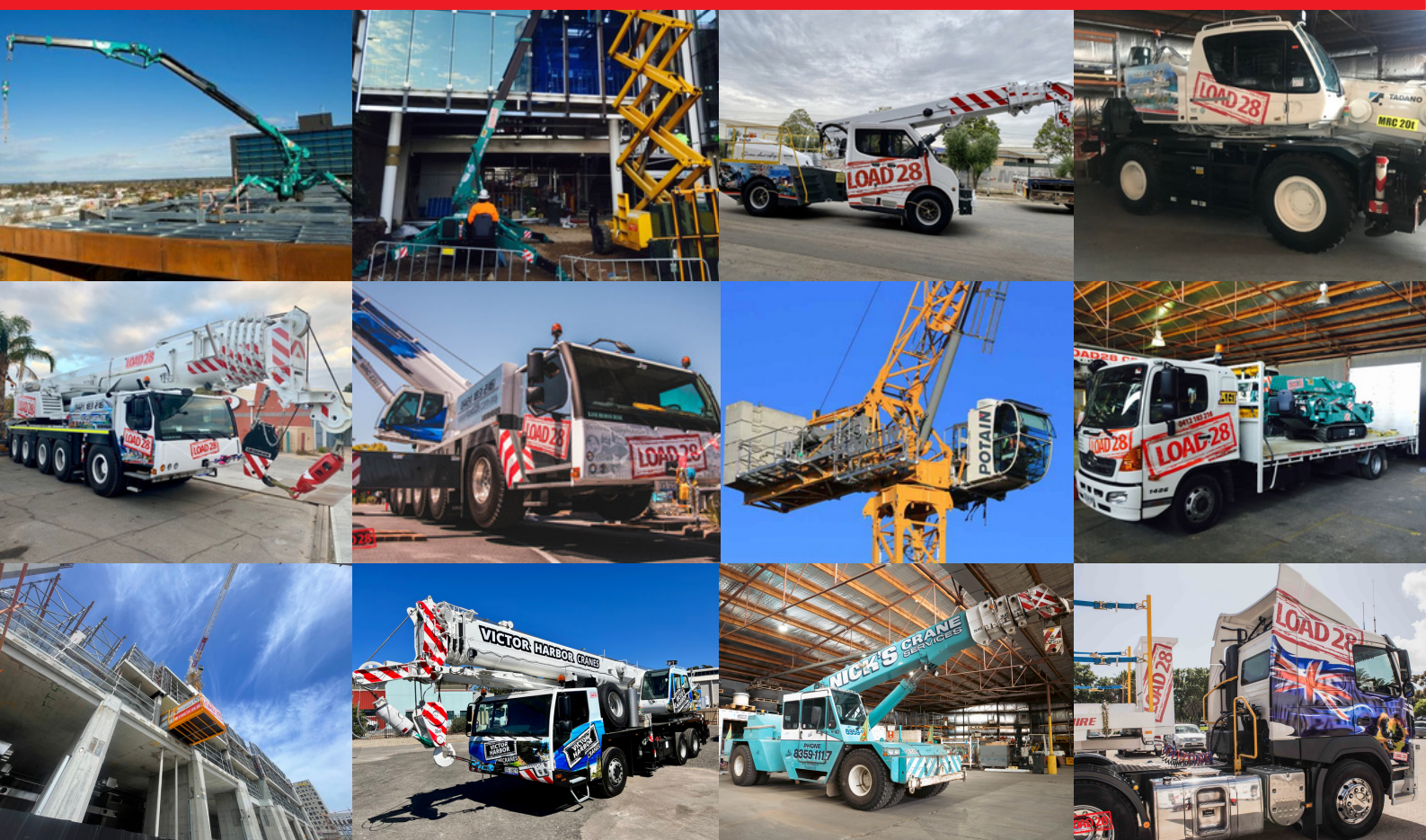
Load 28 can provide an end-to-end vertical access solution for our clients with our man and material hoists for commercial scale building projects, streamlining the services you have on site for better efficiency and cost-saving measures.

Loading Decks

Our Loading Decks provide safe, convenient and cost-effective access solution for loading and unloading materials at multi-storey and high-rise projects by crane. These hydraulic decks are fast, simple and safe, made for single person, fatigue-free operation.



Our Fleet



Load 28 has a total of 29 machines in operation in the following categories;

- Wide range of Mini Crawler Cranes
- 25 ton Pick and Carry Cranes
- 10 Ton City Crane
- 16 Ton City Crane
- 40 Ton Mobile Crane
- 50 Ton Mobile Cranes
- 60 Ton Mobile Cranes
- 95 Ton Mobile Cranes
- 130 Ton Mobile Crane
- 230 Ton Mobile Crane
- Tower Cranes
- Rigid Trucks
- Semi Trailers & Drop Decks
- Vertical Hoists
- Loading Decks
- Lifting gear, lifting cages & Man Boxes

Each piece of equipment in our extensive fleet has been chosen to ensure it is best suited to our scope of work and the services we provide. Our extensive range means we have the capability to tailor a lifting solution to any specific project requirement.

If we are presented with an application that is complicated to lift, we use our innovative mindset to design lifting equipment that makes the process easier and efficient, providing solutions for our clients and giving us an edge over industry competitors.



Some of our Projects

**ADELAIDE FESTIVAL PLAZA****CLIENT**

BUILT

**PROJECT
SCOPE**

Mobile Crane Hire for the installation of Precast Façade panels in the podium façade.

The project required comprehensive lift planning to manage the lifting and rotation of finished concrete panels and installation into the façade. Installation of 20,202 square metres of exterior curtain wall panels and all secondary steelwork and feature aluminium fins and specialised rigging support. Load 28's exceptional project management skills allowed us to tackle and successfully deliver multiple elements for this project.

**150 GRENFELL****CLIENT**

BUILT ENVIRONS

**PROJECT
SCOPE**

Provide and operate MCH125 Tower Crane and construction material hoists and installation of curtain wall facade

Built Environs contracted Load 28 to provide and operate our MCH125 Tower Crane and construction material hoists to service their 150 Grenfell Street project.

We also completed comprehensive lift planning and provided rigging arrangements for the precast demolition. **Load 28 also provided mobile crane hire during the building's demolition.**

Built Environs were that impressed by our capabilities, that at the commencement of the project, they engaged us to complete the installation of the curtain wall facade.



Some of our Projects



60 KING WILLIAM

CLIENT BUILT

PROJECT SCOPE Mobile crane hire, specialised rigging services and curtain wall installation

Load 28 were contracted by Built to deliver the curtain wall installation for 60 King William. The project saw over 30,000 man hours to install over 2000 panels.

As part of our service, Load 28 also provided mobile crane hire and specialised rigging services. This included the development of comprehensive lift planning and engineering as we completed work on suspended slabs with critical path elements.



SKY CITY

CLIENT HANSEN YUNCKEN

PROJECT SCOPE Mobile crane hire, specialised rigging services and facade installation

Load 28 was engaged by Hansen Yuncken to provide mobile crane hire and specialised rigging services for all lifting requirements for this project.

The team provided comprehensive lift planning, completing works on suspended slabs.

We completed all the facade installation for this iconic 6-star project.



Giving Back

Giving Back is an important ethos at Load 28 and one of the core values of our business. Managing Director Marcus Rigney lives by the motto to “give much more than you expect to receive”. In fact, this is the fifth step in his ‘Do You Need a Lift’ Mental Health Program; a program targeted to the construction industry that aims to provide mental health strategies for dealing with stress and crisis.

Barney the Starlight Crane



The project's mission was to partner with the Starlight Children's Foundation to help raise vital funds for children experiencing hospitalisation and serious illness. To date, \$40k and five wishes have been raised. Alongside various campaigns, Load 28 also donates a portion of the machine's hourly rate to Starlight.

RISE Wellness Ambassador



Load 28 Managing Director Marcus Rigney is a Wellness Ambassador for Master Builders SA's RISE program. Wellness Ambassadors are chosen based on their mentoring and industry experience, mental health advocacy, and/or personal journey overcoming stress, burnout, and mental health challenges.

Building Excellence Awards Judge



Load 28 are key sponsors of the highly acclaimed Master Builders SA Building Excellence Awards. MD Marcus Rigney is also a key judge for the program. Marcus commits significant time from his busy schedule to visit and judge some of South Australia's most outstanding commercial building projects. Marcus is also a member of Master Builders SA's Subcontractor committee.



Giving Back

Do You Need a Lift



"Do You Need a Lift" is a mental health program developed by Load 28 MD Marcus Rigney, targeted to the building and construction industry that aims to provide attendees with mental health strategies for dealing with stress and crisis. The program is delivered across key building sites, providing a forum for open conversation and support to supervisors, project / site managers.

Crane Industry Council of Australia (SA)



Marcus Rigney handed over the reigns as Chairman of the Crane Industry Council of Australia (SA Division) to Mark Eberhard in late 2022, after 4 years at the helm. Marcus still plays a key role on the Board for the Association and is a strong supporter of key initiatives and events.

Community & Social Support



Load 28 work hard to support their local community when and where they can. The team, alongside their children, dressed up this year to take part in the 2023 Port Adelaide Christmas Parade and Street Party. The Grinch was definitely the star of the show, alongside our Starlight Children Foundation mascots.



Work, Health & Safety Quality & Environment

Load 28 has a HSEQ Management system, underpinned by Policies and Procedures. As our company is ever evolving, so is our integrated management system.

We are a preferred supplier to a number of Tier 1 projects, so our management system is consistently audited in-house to prepare for the auditing processes undertaken on project commencement.

We are currently working on formal accreditation to our Management System and our initial gap analysis is showing we are only months away to achieving accreditation to all three certifications.

Safe Work Method Statements are completed for all tasks, focusing on the construction high risk tasks as outlined by the Federal Safety Commission.

Our safety performance is exceptionally good, and this can be accredited to the stable and positive culture within our business. Our team are very focused on their equipment and their task, all while ensuring exceptional customer service.

We hold regular tool box talks in-house, where we discuss the importance of compliance to our safety systems, learning from previous mistakes and promoting forward thinking.

Along with our policies and procedures, our equipment and crew are monitored via our computer system Assignar, that monitors and alarms us for equipment compliance checks, crew licensing and induction expiries, crew timesheets and dockets, equipment scheduling, etc.

Serious about Safety

- ✓ All our cranes are maintained and serviced in accordance with the Australian Standards and CICA Crane Safe Assessment.
- ✓ SWMS (Safe Work Method Statements) are prepared on all tasks.
- ✓ Detailed Safety Management Plan continuously reviewed as we work towards third party OH&S Accreditation.
- ✓ To close the loop, we have designed a set of quality ITP (inspection test plans) electronic forms to ensure we delivery quality.
- ✓ We adopt the CICA CrewSafe Program for a comprehensive verification of competency on our equipment.
- ✓ Comprehensive lift planning using computer modelling on all lifts to ensure safety and efficiency.

CraneSafe®
CrewSafe®



Lifting the Bar on Safety



Load 28 are serious about safety. Here are our top 4 safety measures for working on site.

PLAN THE WORK. WORK THE PLAN.



Make sure you have reviewed carefully the specific site control measures listed in your SWMS and Lift Plans.

If the task changes... stop, think about any new control measures and update the SWMS.

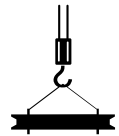
IS THE AREA SAFE?



Make sure that all exclusion zones are in place, so that you can concentrate on the high risk activity.

Ensure that you have protected the people around you.

CHECK EQUIPMENT.



Ensure all equipment has been checked carefully, prestarts completed and all lifting gear is inspected.

Make sure all Weekly Critical Crane Checks have been completed.

WATCH YOUR MATES.



Check each other, and protect your fellow workers.

Construction site safety is not a one-man job.



Our TEAM

Just like our innovative equipment, the Load 28 team are specialists in their field. Our staff are full time, highly trained and continuously updating their qualifications to provide ongoing high level service to the industry.

We have a full contingency of rigging personal, some of which have already undertaken MSIC inductions. Our crew also complete regular VOC training, using the CrewSafe program endorsed by the Crane Industry Council of Australia (CICA).



Marcus Rigney
MANAGING DIRECTOR



Warren Grey
DEPOT MANAGER



Tom Rigney
CRANE MANAGER



Fiona Rigney
OFFICE MANAGER



Luke Haynes
CRANE
COORDINATOR



**George
Protopsaltis**
BDM



Chris Reid
SENIOR CRANE
OPERATOR



Matt Cook
AGI SUPERVISOR



Luke Platos
AGI SUPERVISOR



**Debbie
Henderson**
ACCOUNTS OFFICER



Sarah Hill
SENIOR ADMIN/
PROJECTS



Jenny Cotroneo
PAYROLL OFFICER

CRANE HIRE SERVICES

Supplying crane & lifting equipment of a highly maintained standard, crew that are expertly trained and rigging equipment to the industry that is innovative.





**For enquiries,
contact us.**

www.load28.com.au

bookings@load28.com.au

1300 11 28 28

